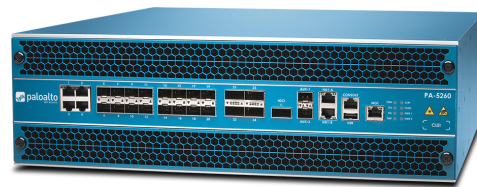


Palo Alto Networks PA-5200 Series Next-Generation Firewalls—comprising the PA-5280, PA-5260, PA-5250, and PA-5220—are ideal for high-speed data center, internet gateway, and service provider deployments. The PA-5200 Series delivers up to 64 Gbps of throughput, using dedicated processing and memory, for the key functional areas of networking, security, threat prevention, and management.

PA-5200 Series



PA-5260

The controlling element of the PA-5200 Series is PAN-OS®, which natively classifies all traffic, inclusive of applications, threats, and content, and then ties that traffic to the user regardless of location or device type. The application, content, and user—in other words, the elements that run your business—then serve as the basis of your security policies, resulting in improved security posture and reduced incident response time.

Key Security Features

Classifies all applications, on all ports, all the time

- Identifies the application, regardless of port, SSL/SSH encryption, or evasive technique employed.
- Uses the application, not the port, as the basis for all your safe enablement policy decisions: allow, deny, schedule, inspect, and apply traffic-shaping.
- Categorizes unidentified applications for policy control, threat forensics, or App-ID™ technology development.

Enforces security policies for any user, anywhere

- Deploys consistent policies to local and remote users running on the Windows®, macOS®, Linux, Android®, or Apple iOS platforms.

- Enables agentless integration with Microsoft Active Directory® and Terminal Services, LDAP, Novell eDirectory™, and Citrix.
- Easily integrates your firewall policies with 802.1X wireless, proxies, network access control, and any other source of user identity information.

Prevents known and unknown threats

- Blocks a range of known threats—including exploits, malware, and spyware—across all ports, regardless of common threat-evasion tactics employed.
- Limits the unauthorized transfer of files and sensitive data, and safely enables non-work-related web surfing.
- Identifies unknown malware, analyzes it based on hundreds of malicious behaviors, and then automatically creates and delivers protection.

Table 1: PA-5200 Series Performance and Capacities

	PA-5280	PA-5260	PA-5250	PA-5220
Firewall throughput (HTTP/appmix) ¹	56/64 Gbps	56/64 Gbps	38/40 Gbps	15.6/20 Gbps
Threat Prevention throughput (HTTP/appmix) ²	26/31.5 Gbps	26/31.5 Gbps	17/21 Gbps	7.2/8.9 Gbps
IPsec VPN throughput ³	27 Gbps	27 Gbps	18 Gbps	10 Gbps
Max sessions	64M	32M	8M	4M
New sessions per second ⁴	450,000	450,000	297,000	133,000
Virtual systems (base/max) ⁵	25/225	25/225	25/125	10/20

1. Firewall throughput is measured with App-ID and logging enabled, utilizing 64 KB HTTP/appmix transactions.

2. Threat Prevention throughput is measured with App-ID, IPS, antivirus, anti-spyware, WildFire, file blocking, and logging enabled, utilizing 64 KB HTTP/appmix transactions.

3. IPsec VPN throughput is measured with 64 KB HTTP transactions and logging enabled.

4. New sessions per second is measured with application-override, utilizing 1 byte HTTP transactions.

5. Adding virtual systems over base quantity requires a separately purchased license.

Table 2: PA-5200 Series Networking Features

Interface Modes
L2, L3, tap, virtual wire (transparent mode)
Routing
OSPFv2/v3 with graceful restart, BGP with graceful restart, RIP, static routing
Policy-based forwarding
Point-to-point protocol over Ethernet (PPPoE) and DHCP supported for dynamic address assignment
Multicast: PIM-SM, PIM-SSM, IGMP v1, v2, and v3
Bidirectional Forwarding Detection (BFD)

Table 3: PA-5200 Series Hardware Specifications

I/O
PA-5280 / PA-5260 / PA-5250: 100/1000/10G Cu (4), 1G/10G SFP/SFP+ (16), 40G/100G QSFP28 (4)
PA-5220: 100/1000/10G Cu (4), 1G/10G SFP/SFP+ (16), 40G QSFP+ (4)
Management I/O
PA-5280 / PA-5260 / PA-5250: (2) 10/100/1000, (1) 40G/100G QSFP28 HA, (1) 10/100/1000 out-of-band management, (1) RJ45 console port
PA-5220: (2) 10/100/1000, (1) 40G QSFP+ HA, (1) 10/100/1000 out-of-band management, (1) RJ45 console port

Table 3: PA-5200 Series Hardware Specifications (continued)

SD-WAN
Path quality measurement (jitter, packet loss, latency)
Initial path selection (PBF)
Dynamic path change
IPv6
L2, L3, tap, virtual wire (transparent mode)
Features: App-ID, User-ID, Content-ID, WildFire, and SSL Decryption
SLAAC
IPsec VPN
Key exchange: manual key, IKEv1 and IKEv2 (pre-shared key, certificate-based authentication)
Encryption: 3DES, AES (128-bit, 192-bit, 256-bit)
Authentication: MD5, SHA-1, SHA-256, SHA-384, SHA-512
GlobalProtect large-scale VPN for simplified configuration and management
VLANs
802.1Q VLAN tags per device/per interface: 4,094/4,094
Aggregate interfaces (802.3ad), LACP
Network Address Translation
NAT modes (IPv4): static IP, dynamic IP, dynamic IP and port (port address translation)
NAT64, NPTv6
Additional NAT features: dynamic IP reservation, tunable dynamic IP and port oversubscription
High Availability
Modes: active/active, active/passive
Failure detection: path monitoring, interface monitoring
Mobile Network Infrastructure
GTP Security
SCTP Security

Storage Capacity
240 GB SSD, RAID1, system storage 2 TB HDD, RAID1, log storage
Power Supply (Avg/Max Power Consumption)
571/685 W
Max BTU/hr
2,340
Power Supplies (Base/Max)
1:1 fully redundant (2/2)
AC Input Voltage (Input Hz)
100–240 VAC (50–60 Hz)
AC Power Supply Output
1,200 watts/power supply
Max Current Consumption
AC: 8.5 A @ 100 VAC, 3.6 A @ 240 VAC DC: 19 A @ -40 VDC, 12.7 A @ -60 VDC
Max Inrush Current
AC: 50 A @ 230 VAC, 50 A @ 120 VAC DC: 200 A @ 72 VDC
DC: 200 A @ 72 VDC
9.23 years
Rack Mount (Dimensions)
3U, 19" standard rack 5.25" H x 20.5" D x 17.25" W
Weight (Standalone Device/As Shipped)
46 lbs / 62 lbs
Safety
cCSAus, CB IEC 60950-1
EMI
FCC Class A, CE Class A, VCCI Class A
Certifications
See https://www.paloaltonetworks.com/services/education/certification
Environment
Operating temperature: 32° to 122° F, 0° to 50° C Non-operating temperature: -4° to 158° F, -20° to 70° C